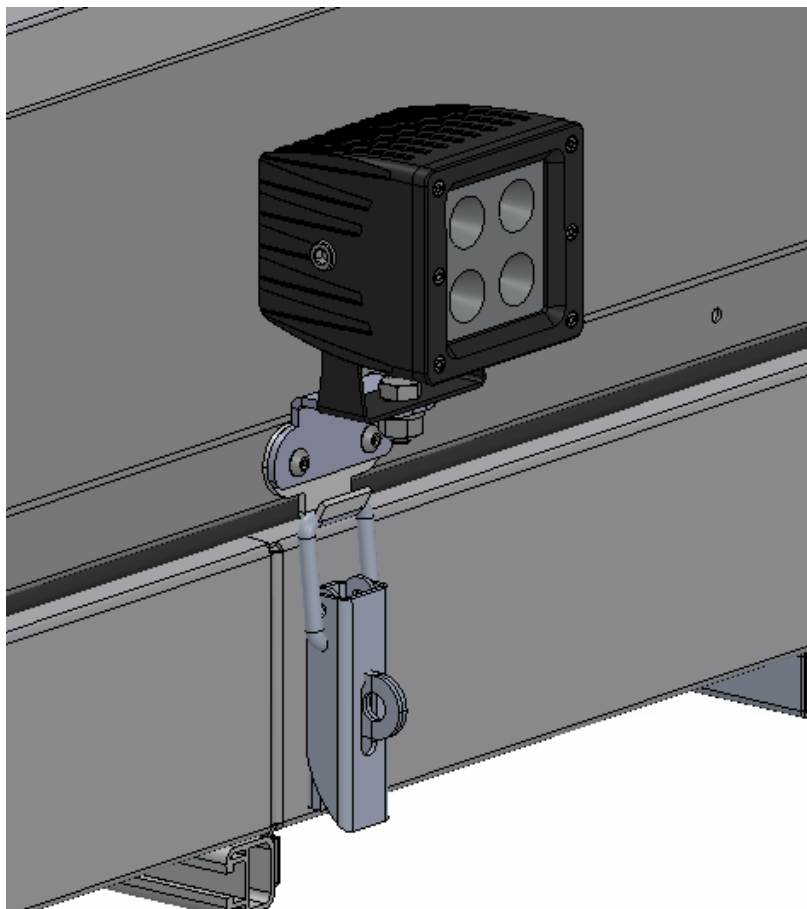




Work Light Bracket Fitment Instructions



1. Work Light Bracket – Tools, Fasteners & Materials

The tables below show the equipment, i.e. tools, fasteners, hardware and consumables required to start and finish the fitment of the work light bracket.

Hardware Supplied with Work light bracket kit:

ITEM NO.	PART NUMBER	DESCRIPTION	QTY.
1	418-WRK-LIG-BRKT-01-00	Work Light Bracket	1
2	M5 Nyloc nut	M5 Nyloc nut	2

1.1 Tools required to fit work light bracket kit:

<u>TOOL</u>	<u>PURPOSE</u>
Size 3 Allen Key	Fastening various bolts
8mm spanner	Spanner to tighten various bolts

Part Identification:

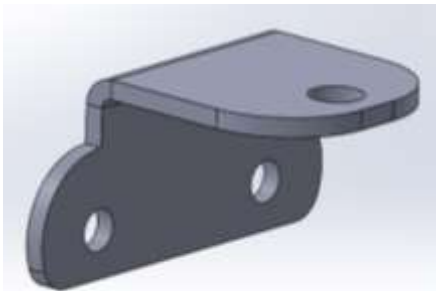


Figure 1: Work Light Bracket

2. Fitting the work light bracket:

Step 1: Remove M5 Button head screws as shown below.

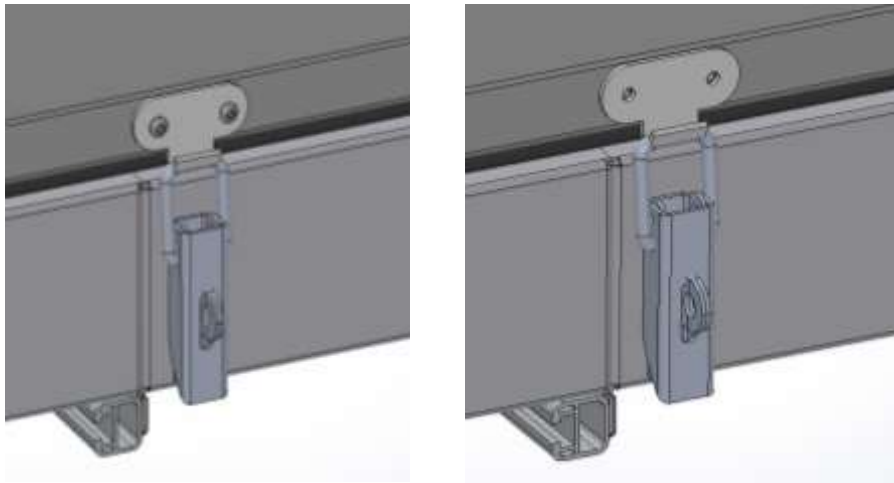


Figure 2: Button head bolts removed

Step 2: Fasten work light bracket in place.

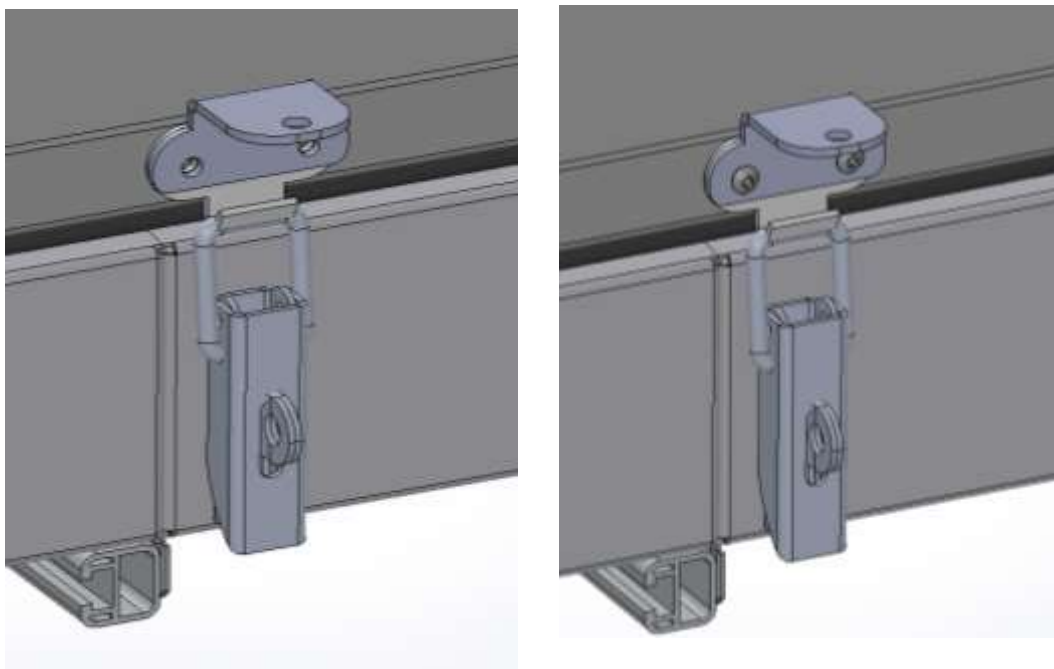


Figure 3: Work light bracket installed

Using the same M5 button head screws, fasten the work light bracket in place. Be sure to use the new M5 nyloc nuts provided in the kit. Place plastic nut caps on nyloc nuts.

Step 3: Fasten light in the hole provided as shown below.

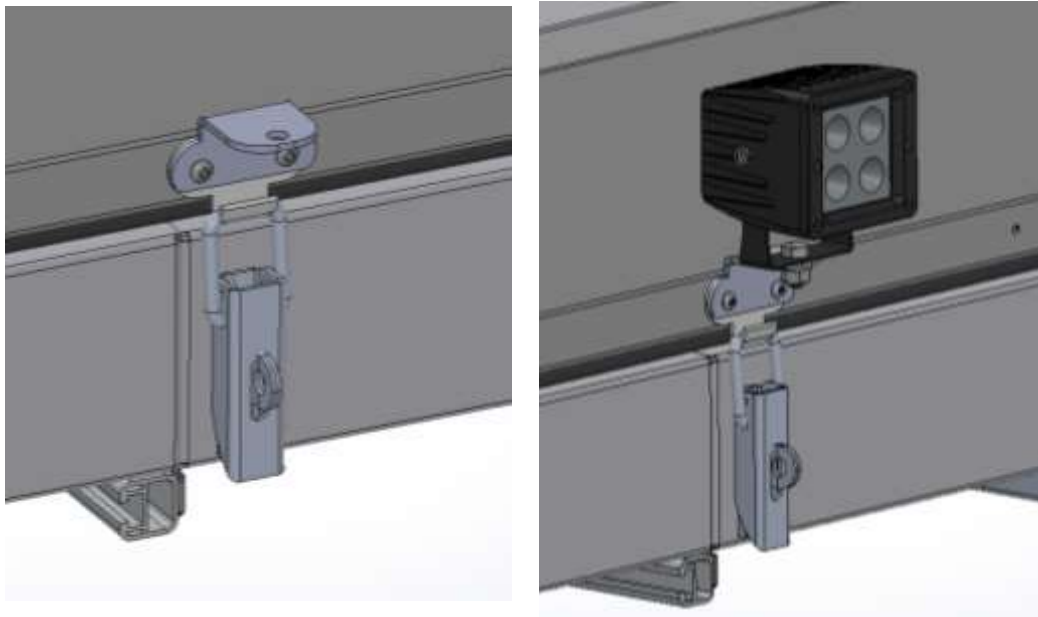


Figure 4: Work light bracket with light attached