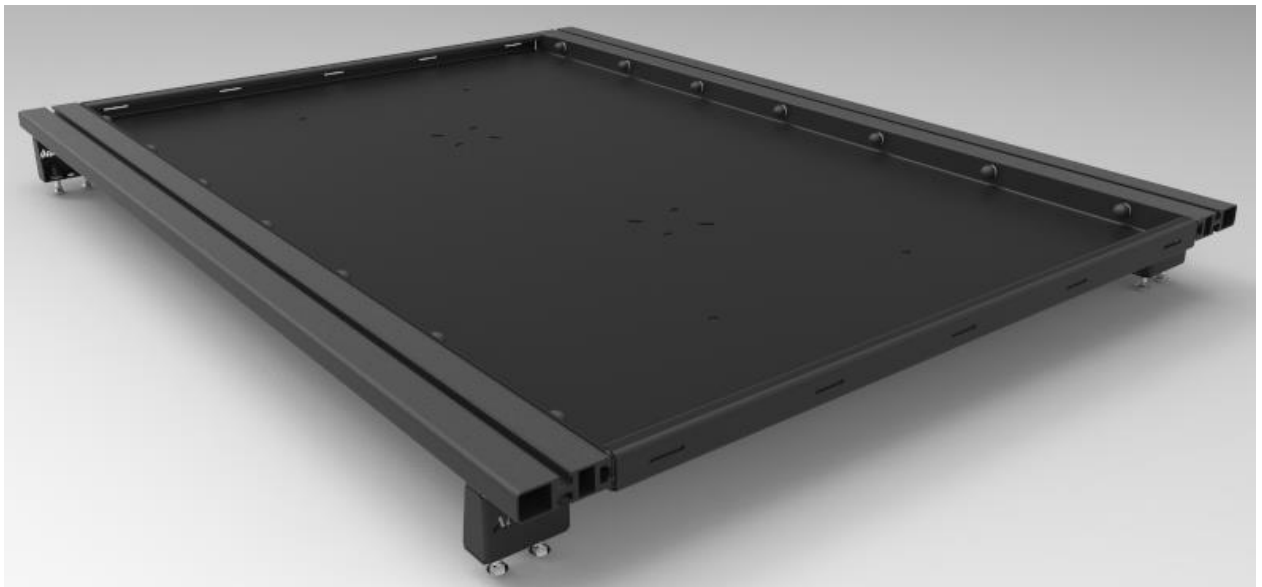




Roof Rack Tray

Fitment Instructions



1. Roof Rack Tray – Tools, Fasteners & Materials

The tables below show the equipment, i.e. tools, fasteners, hardware and consumables required to start and finish the fitment of the roof rack tray.

Hardware Supplied with Roof Rack Tray kit:

ITEM NO.	PART NUMBER	DESCRIPTION	QTY.
1	413-ROOF-TRAY-01-00	Roof Tray	1
2	M8 Plastic Nut Caps	M8 Plastic Nut Caps	14
3	M8x20 HEX BOLT	M8x20 HEX BOLT	14
4	M8 NYLOC NUT	M8 NYLOC NUT	14
9	M8 FLAT WASHER	M8 FLAT WASHER	14

1.1 Tools required to fit Roof rack tray kit:

TOOL	PURPOSE
13mm spanner	Spanner to tighten various bolts
13mm socket	Fastening various bolts
Ratchet	Fastening various bolts

Part Identification:



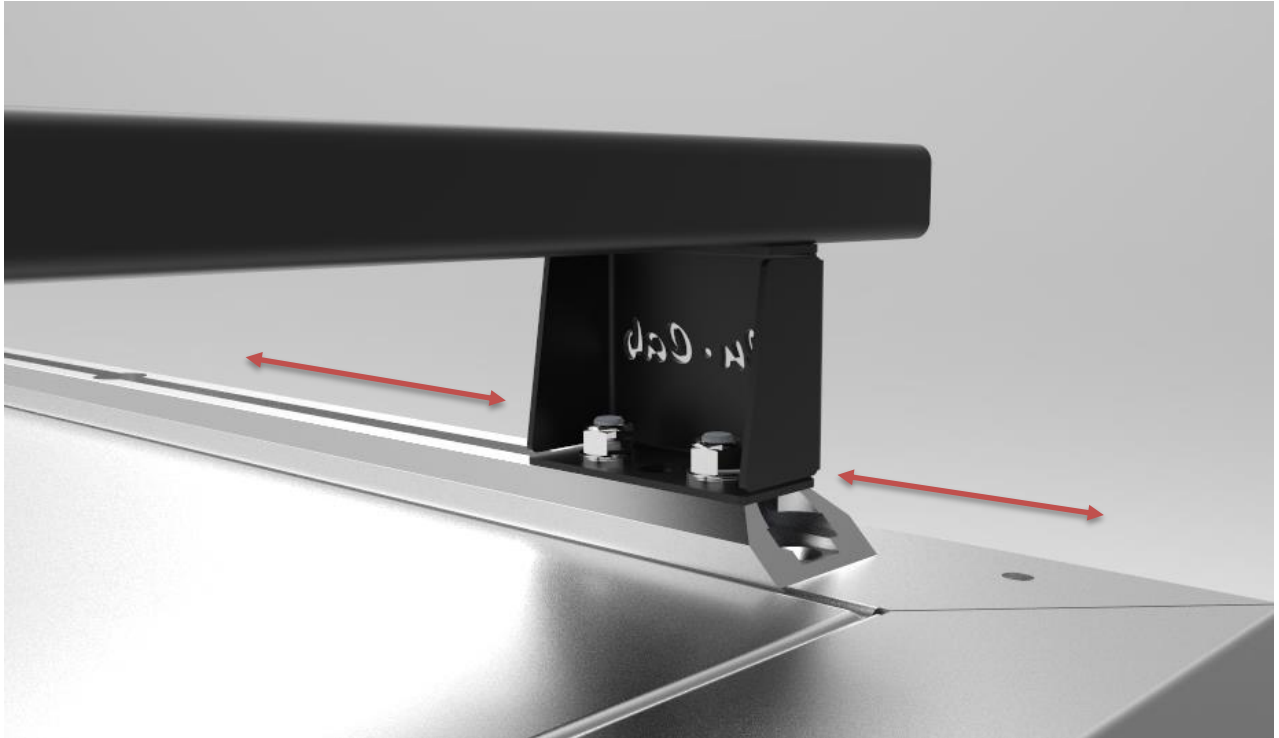
Roof Rack Tray

Please note:

- To use the Roof Rack Tray on your Alu-Cab Camper, Gen 3 Tent or Canopy you will need a set of Alu-Cab load bars with standard Load bar feet.
- To use the Roof Rack Tray on your Alu-Cab Camper, Gen 3 Tent or Canopy with the Load Bar Table Slide, you will need a set of Alu-Cab load bars with Roof Rack feet.

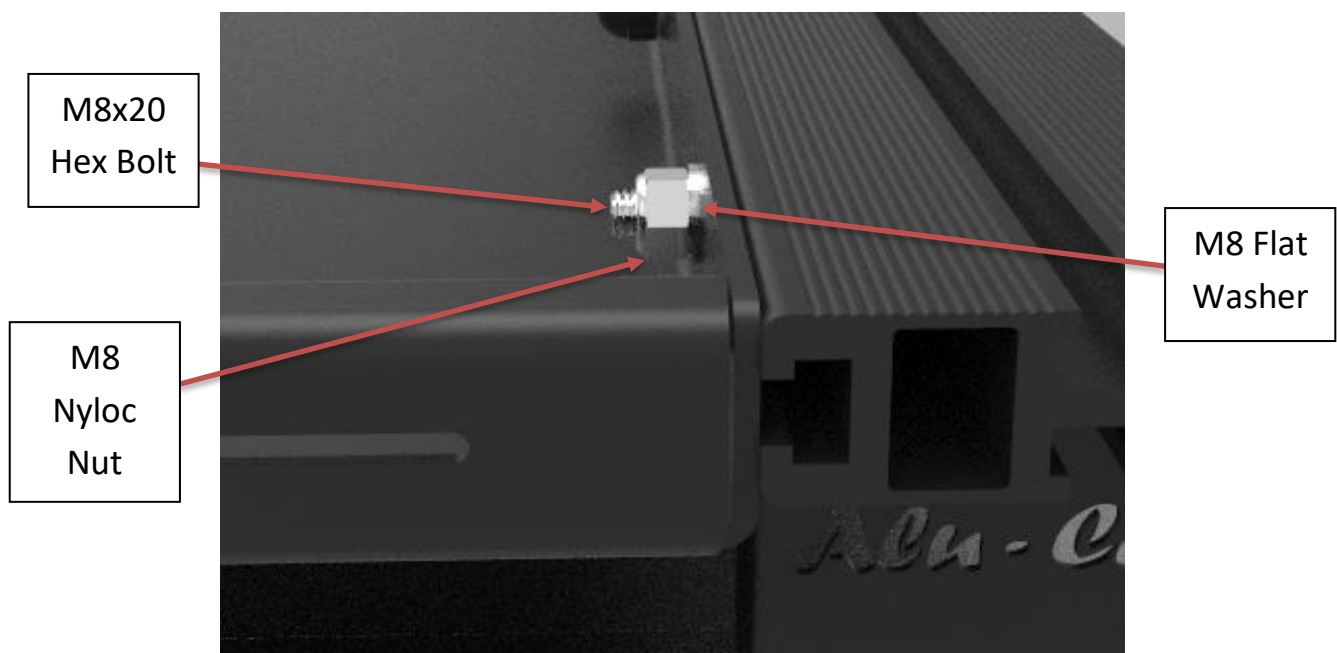
Step 1: Ensure you load bars are installed on your cargo rails.

The Nyloc nuts on the bottom of the load bar feet should not be tightened completely in order to allow the load bar to slide in the cargo rail. This will make it easier to manoeuvre while fitting the roof rack tray.

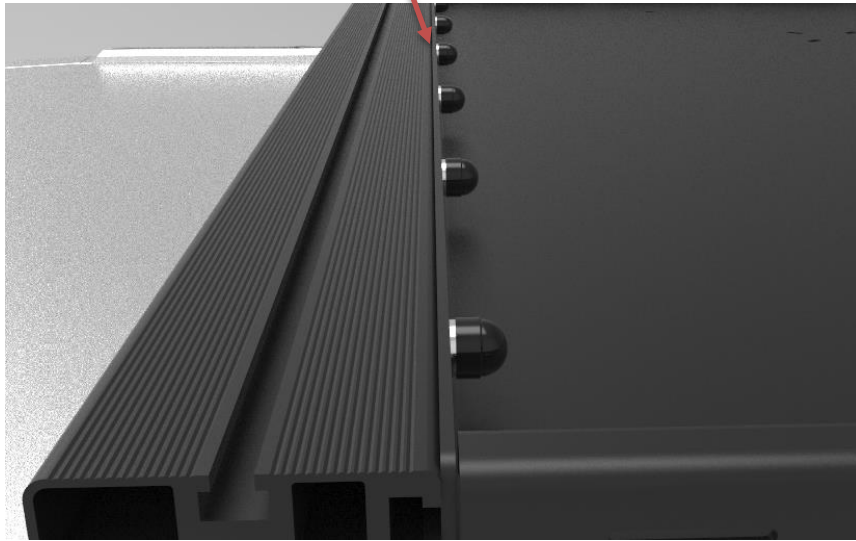


Step 2:

Mount the roof rack tray using the 14 x M8x20 Hex Bolts, 14 x M8x17 flat washers and M8 Nyloc nuts as shown below. Ensure that the load bars and Roof Rack Tray are centred before tightening.

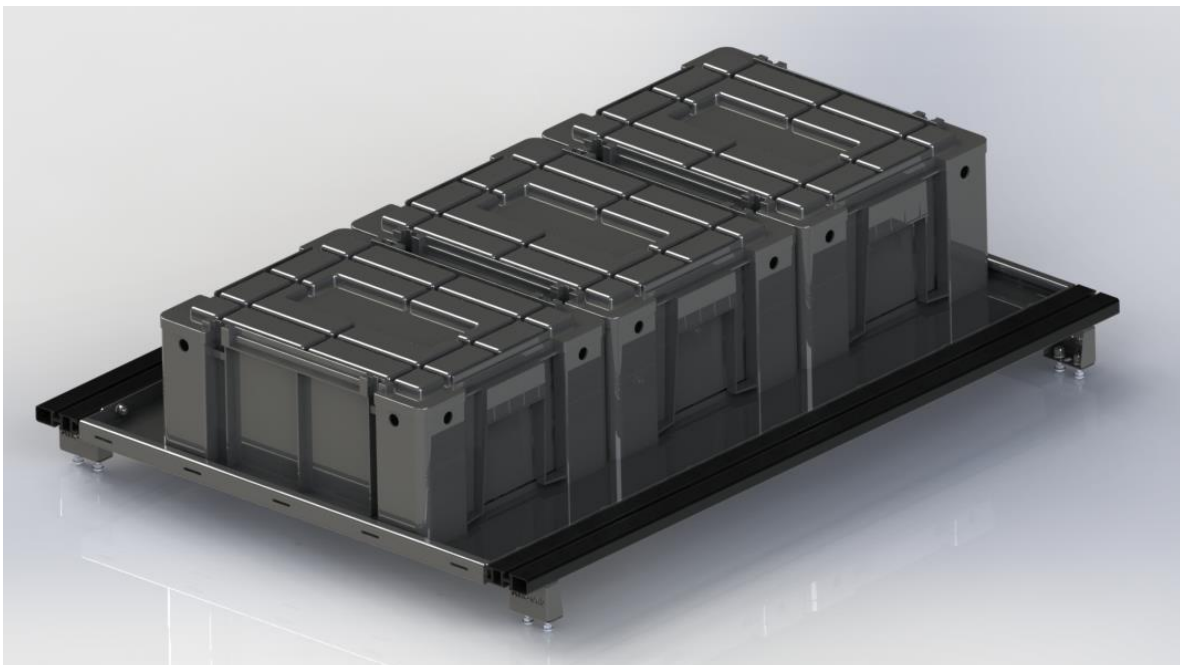


Step 3: Place plastic nut caps on all M8 Nyloc Nuts.

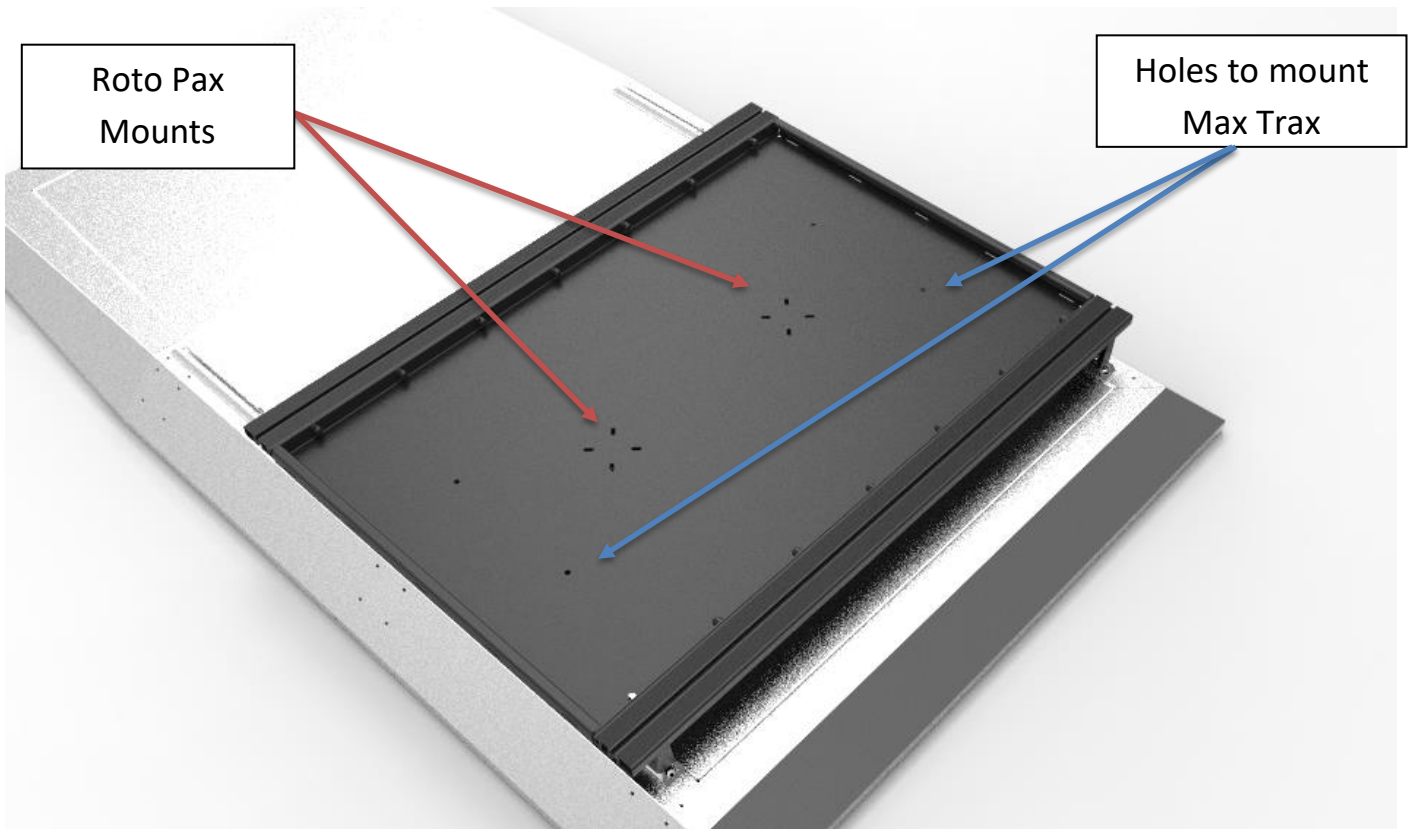


Possible Uses of the Roof Rack Tray:

Storage for 3 x Wolfpack Ammo Box Slides



Mounts for 2 x Roto Pax OR Max Trax recovery tracks



Storage for 2 x Jerry Cans (with Alu-Cab Jerry Can Holder) and 3 x Wolfpack Ammo Boxes.

