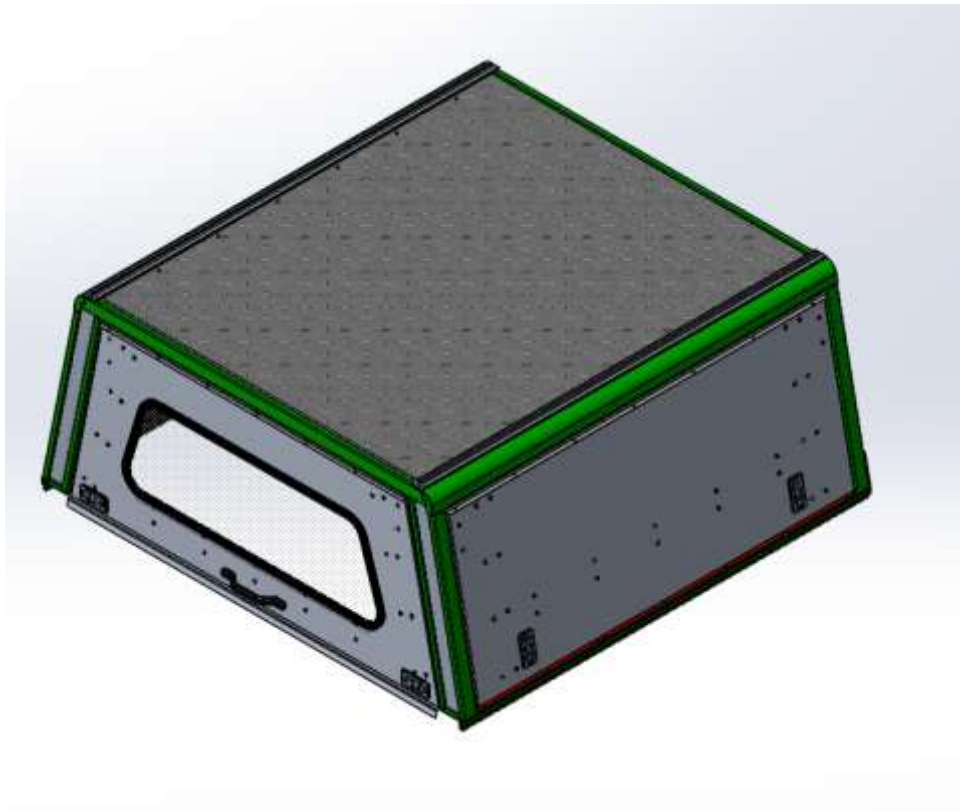


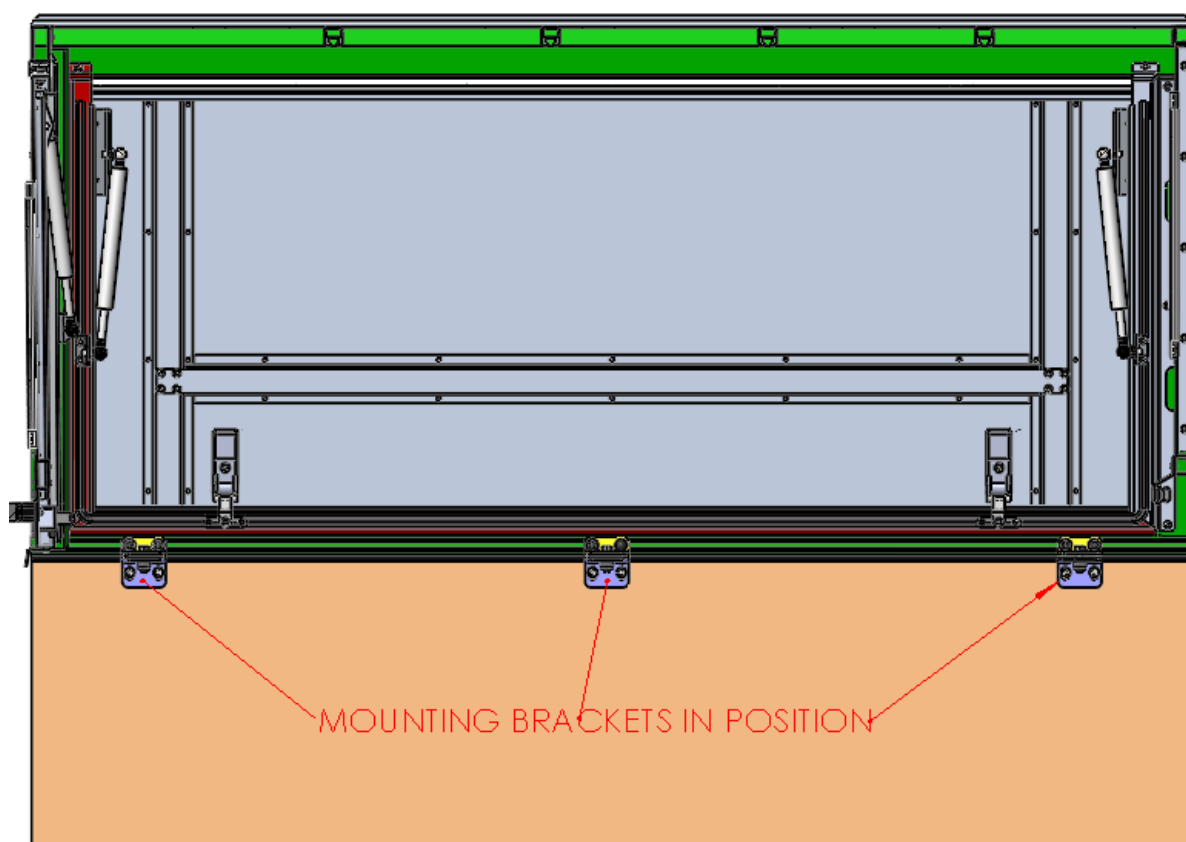


# Toyota Land Cruiser Canopy

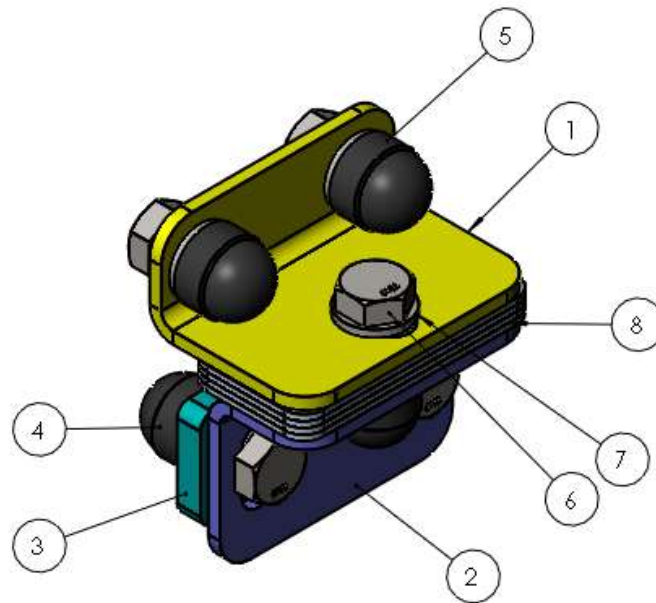
## Fitment Instructions.



1. Illustration of a cross section of canopy with 3 mounting brackets in position.



## **MOUNTING BRACKET ASSEMBLY:**



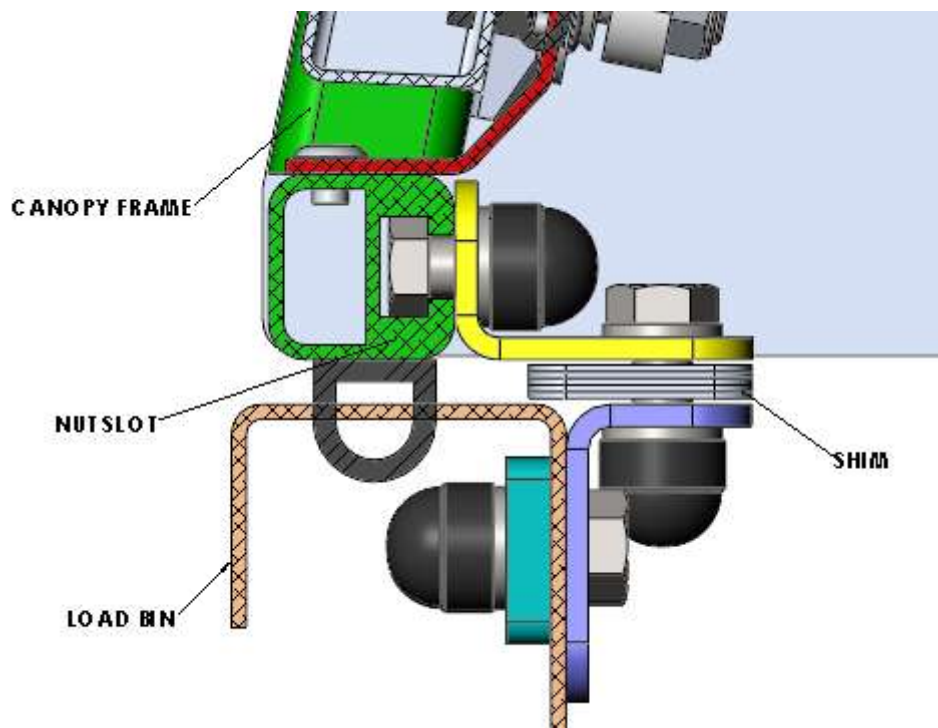
Bill Of Materials below for 1 set of the mounting bracket assembly.

<b>TOYOTA LAND CRUISER MOUNTING BRACKET ASSEMBLY</b>			
<b>ITEM NO.</b>	<b>PART NUMBER</b>	<b>DESCRIPTION</b>	<b>QTY.</b>
1	212-MNT-BRKT-01-00	CANOPY MOUNTING BRACKET	1
2	212-MNT-BRKT-02-00	MOUNTING BRACKET 2	1
3	212-BCK-PLT-01-00	MOUNTING BACKING PLATE	1
4	M8 Nut Cap	M8 NUT CAP	5
5	N8 Nyloc Nut	N8 Nyloc Nut	5
6	M8x20 Hex Head Bolt	M8x20 Hex Head Bolt	5
7	M8 Flat Washer	M8 Flat Washer	6
8	TLC SHIM	SHIM	5

**NB!**

6 sets required for Double and 8 for Single Cab vehicle's.

Illustration showing a cross section of the mounting bracket assembly in position.



1. Bolt on Item 1 to the nut slot extrusion.
2. Position bracket 2 on loadbin and drill 2 x  $\varnothing 9$ mm holes through.
3. Bolt on Item 2 using Item 3 with backing plate for support.
4. Insert the required amount of shims to take up the gap between brackets when tightening.